



ISTITUTO COMPRENSIVO PESCARA 6

SCUOLA SECONDARIA DI I GRADO

"B. CROCE"

PROVE COMUNI di

ITALIANO

MATEMATICA

LINGUA INGLESE

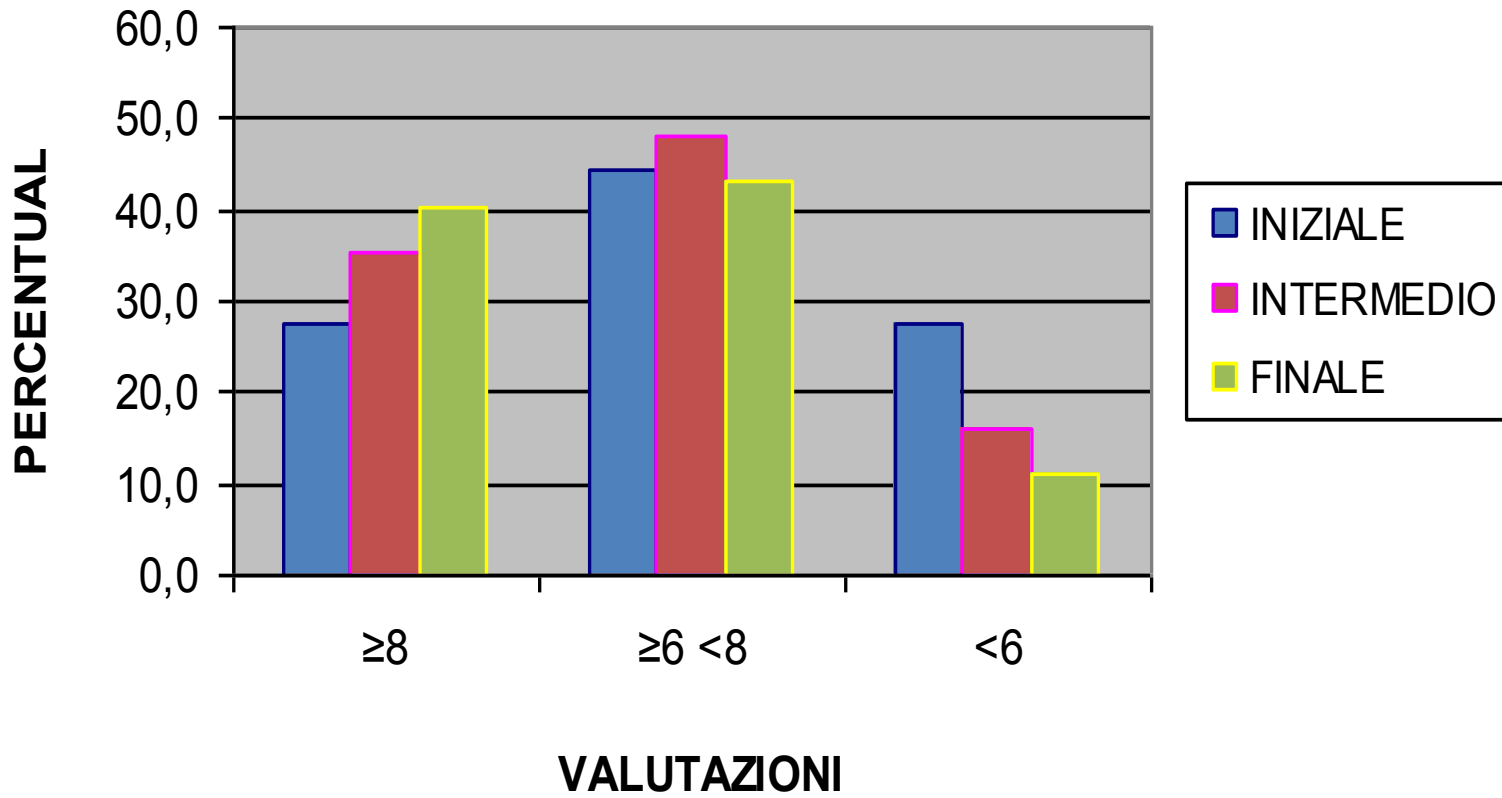
Anno Scolastico 2015/2016



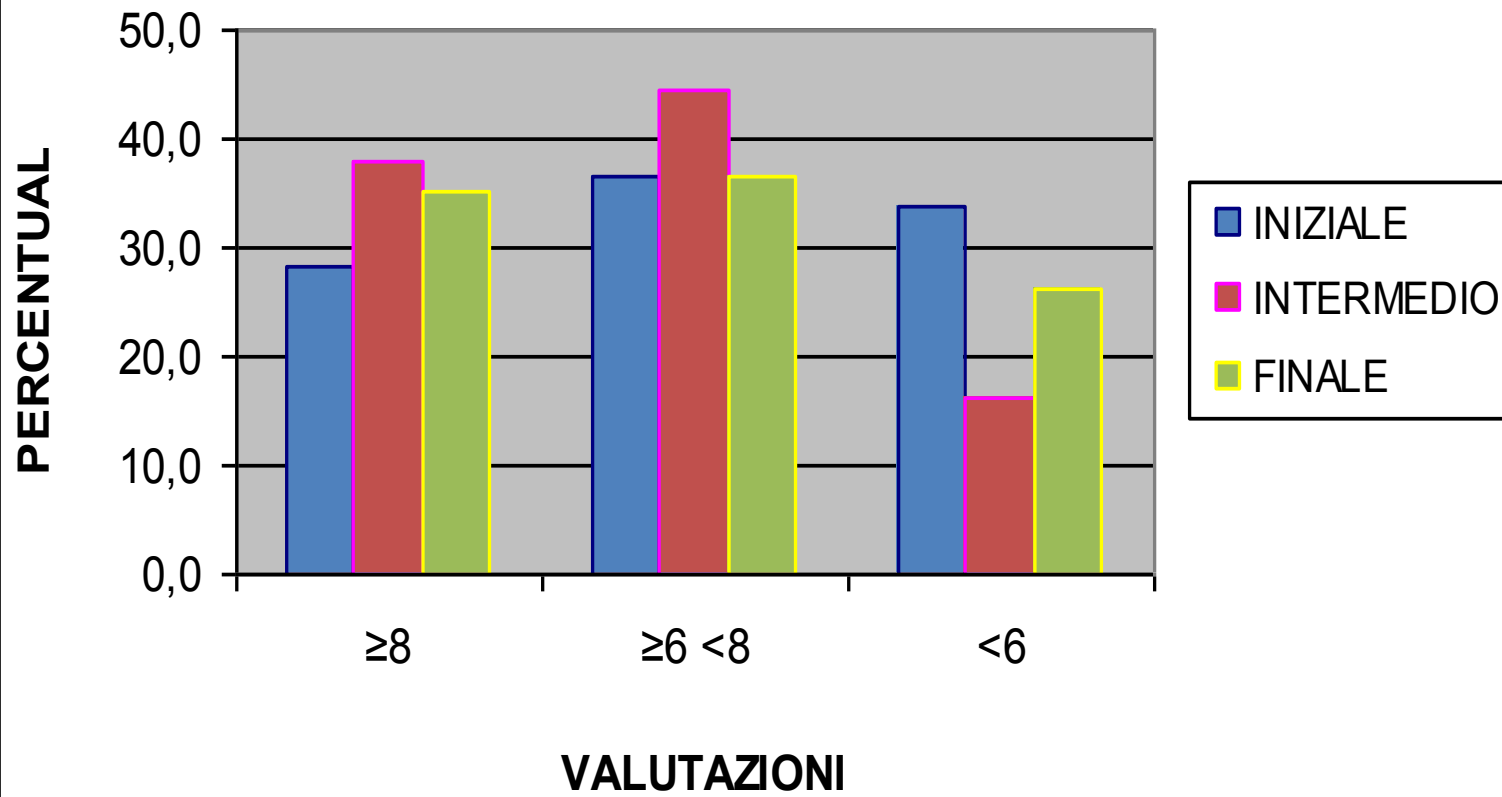
CLASSI PRIME

Scuola secondaria di I grado
"B. Croce"

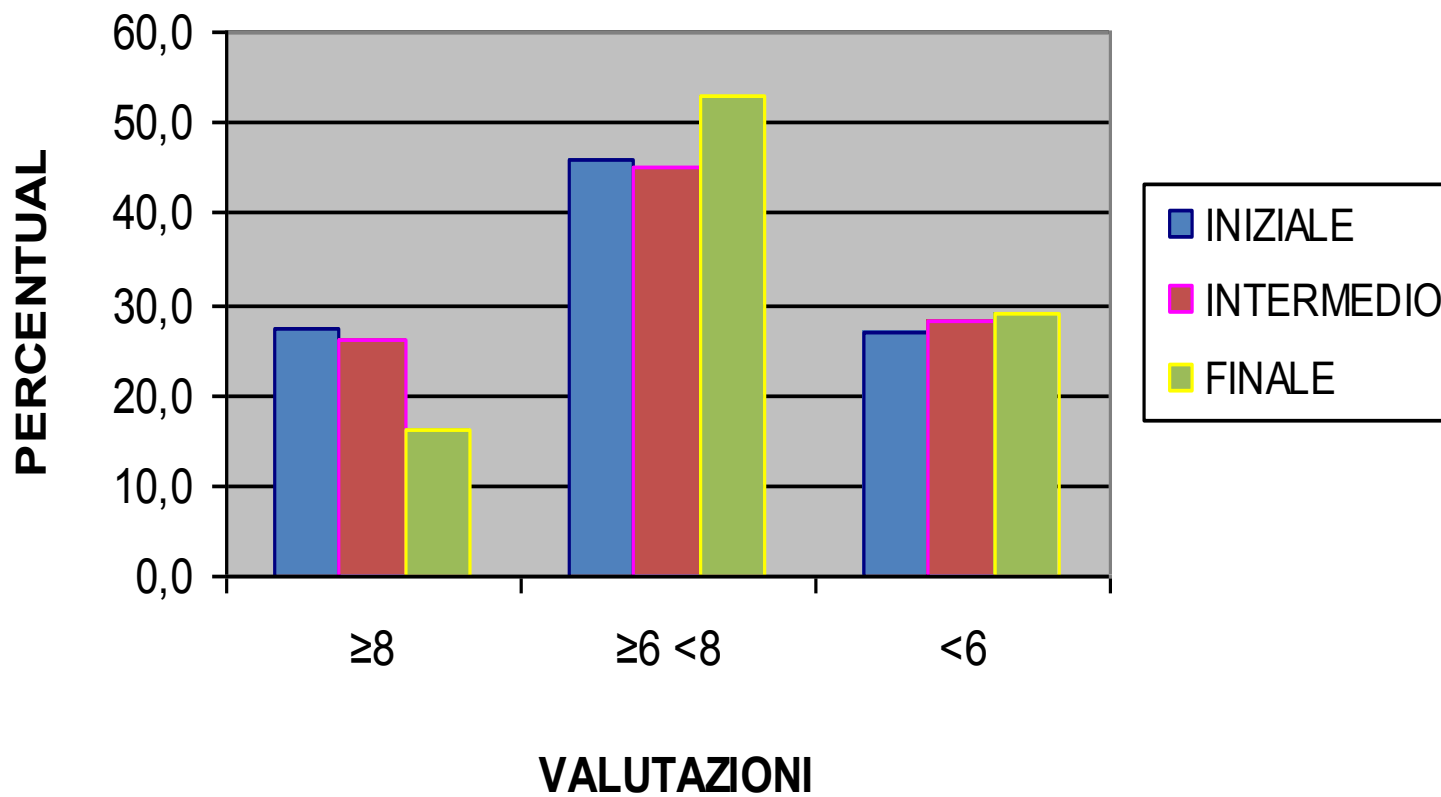
ITALIANO



MATEMATICA



INGLESE



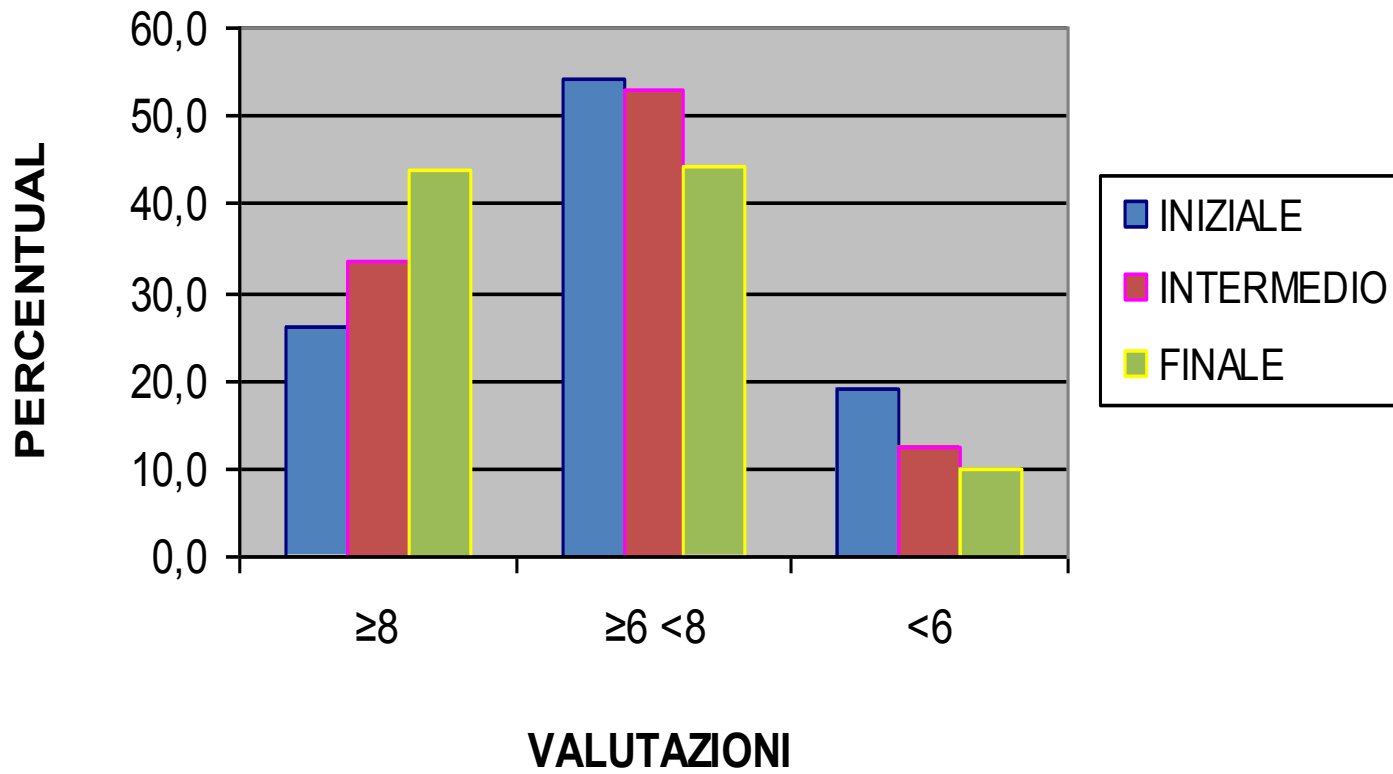


CLASSI SECONDE

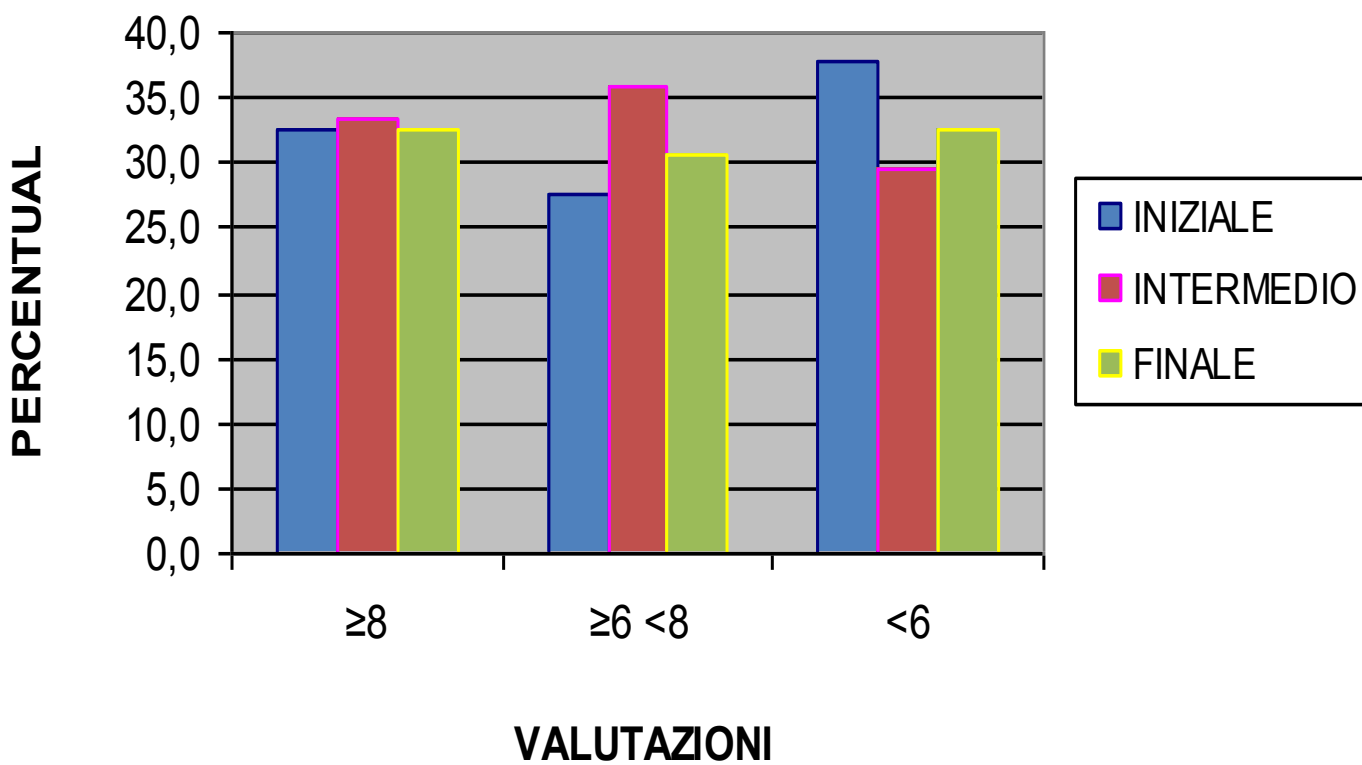
Scuola secondaria di I grado

“B. Croce”

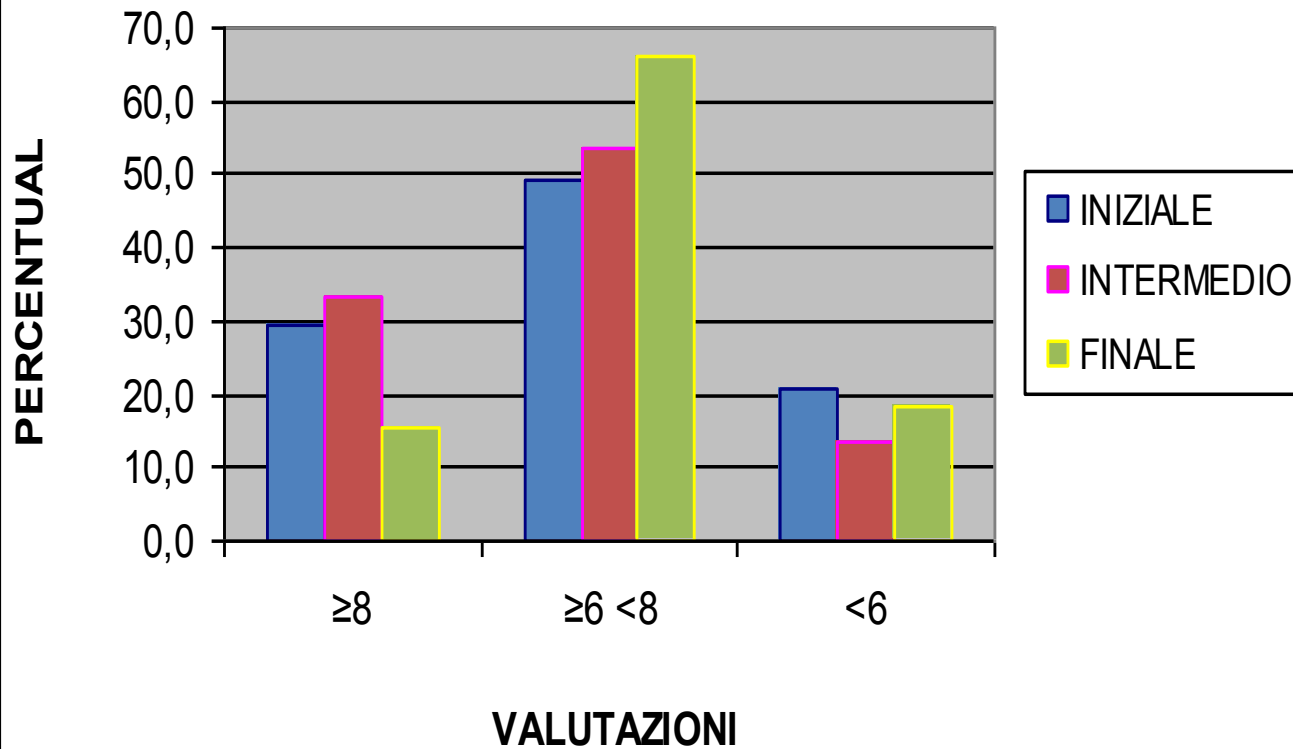
ITALIANO



MATEMATICA



INGLESE

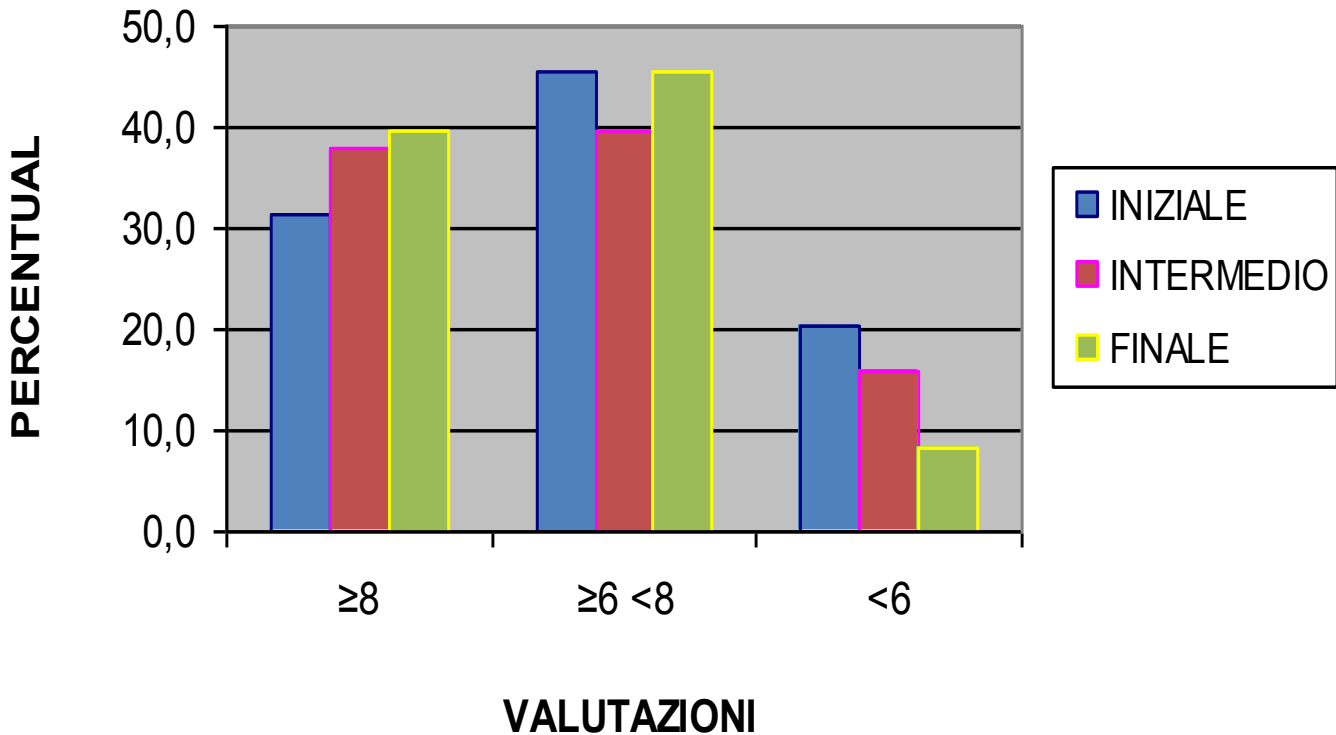




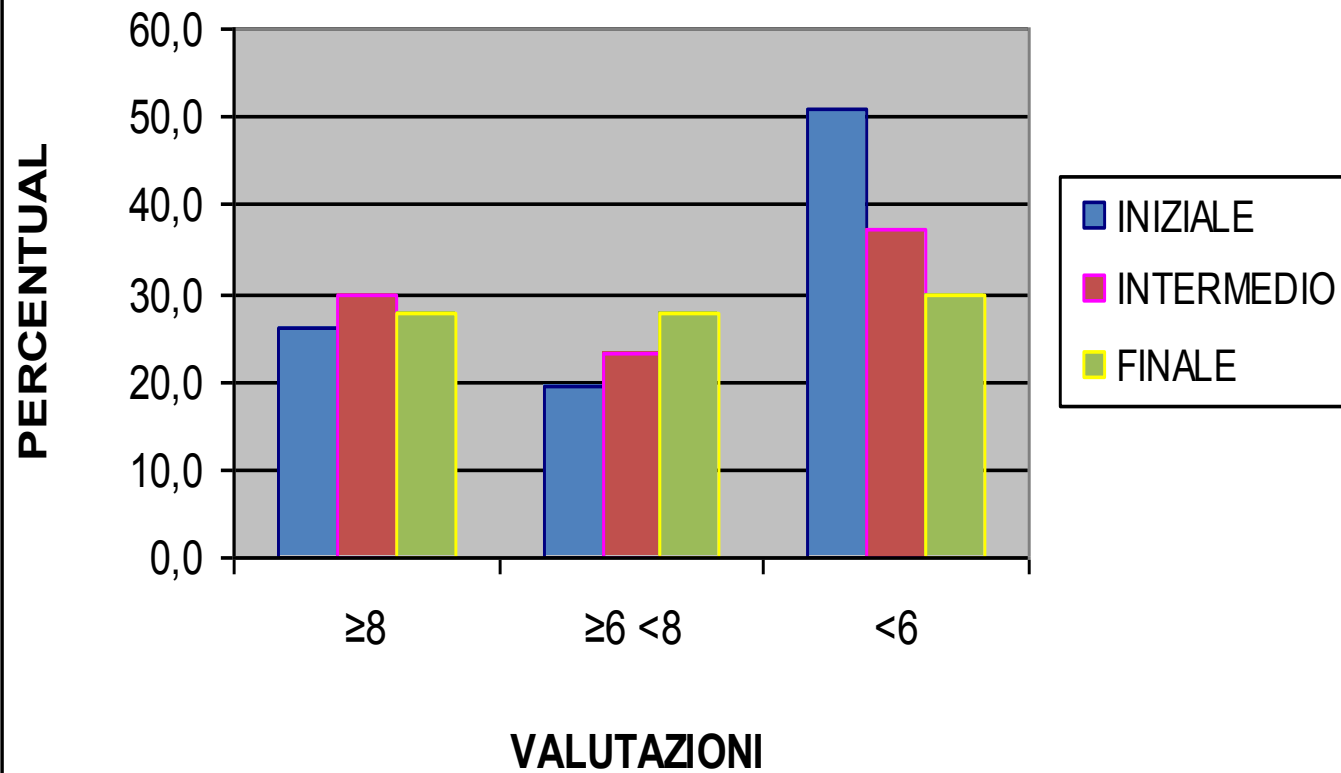
CLASSI TERZE

Scuola secondaria di I grado
"B. Croce"

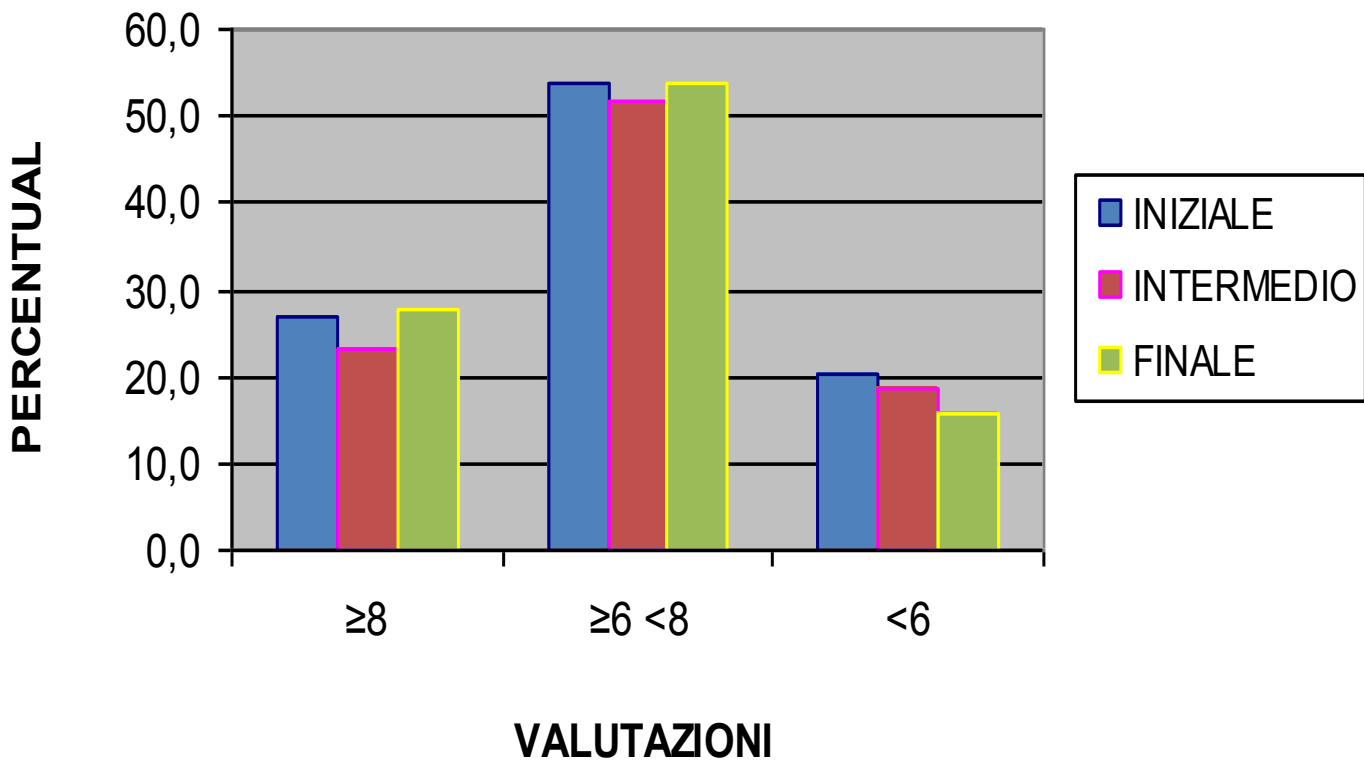
ITALIANO



MATEMATICA



INGLESE

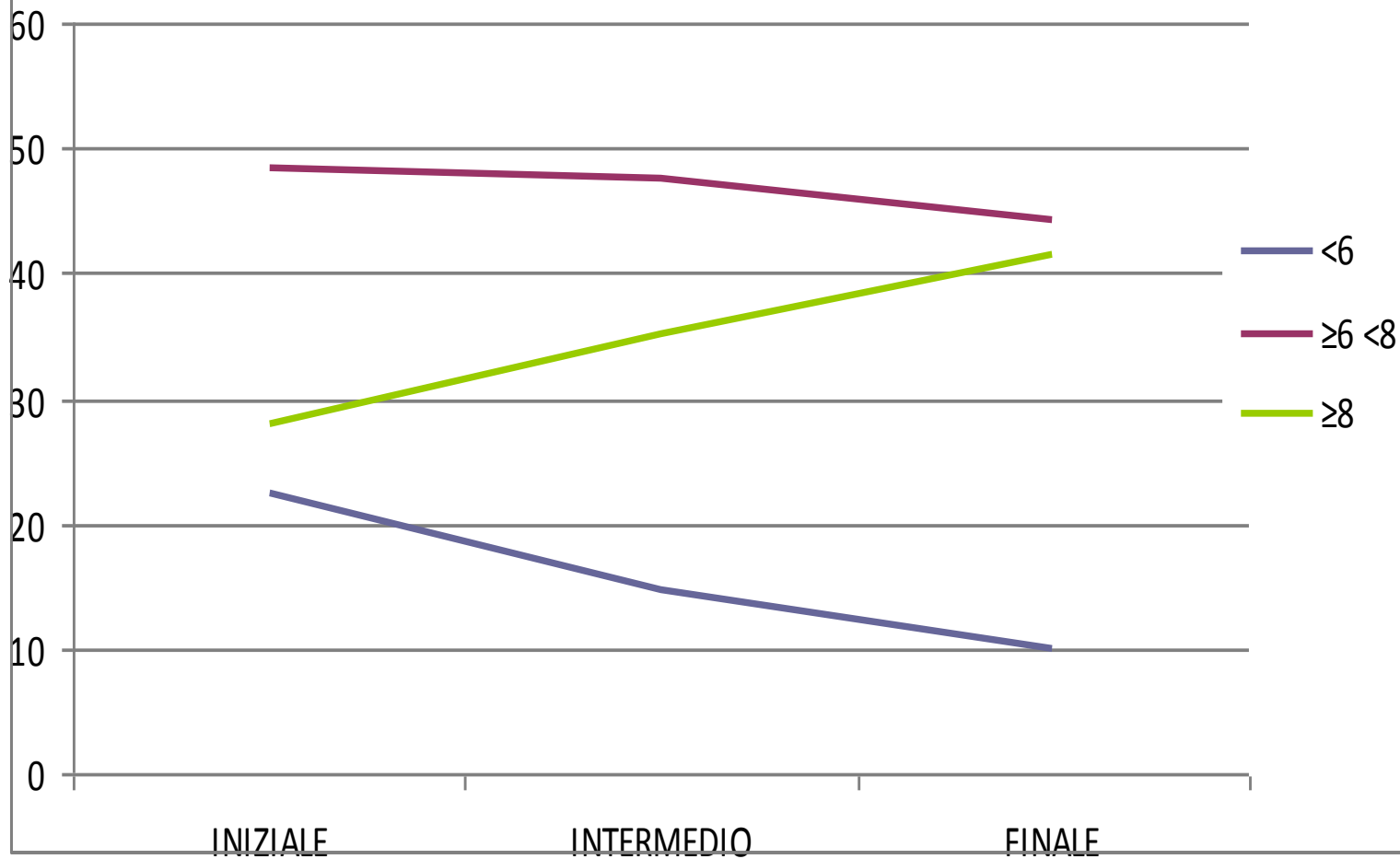




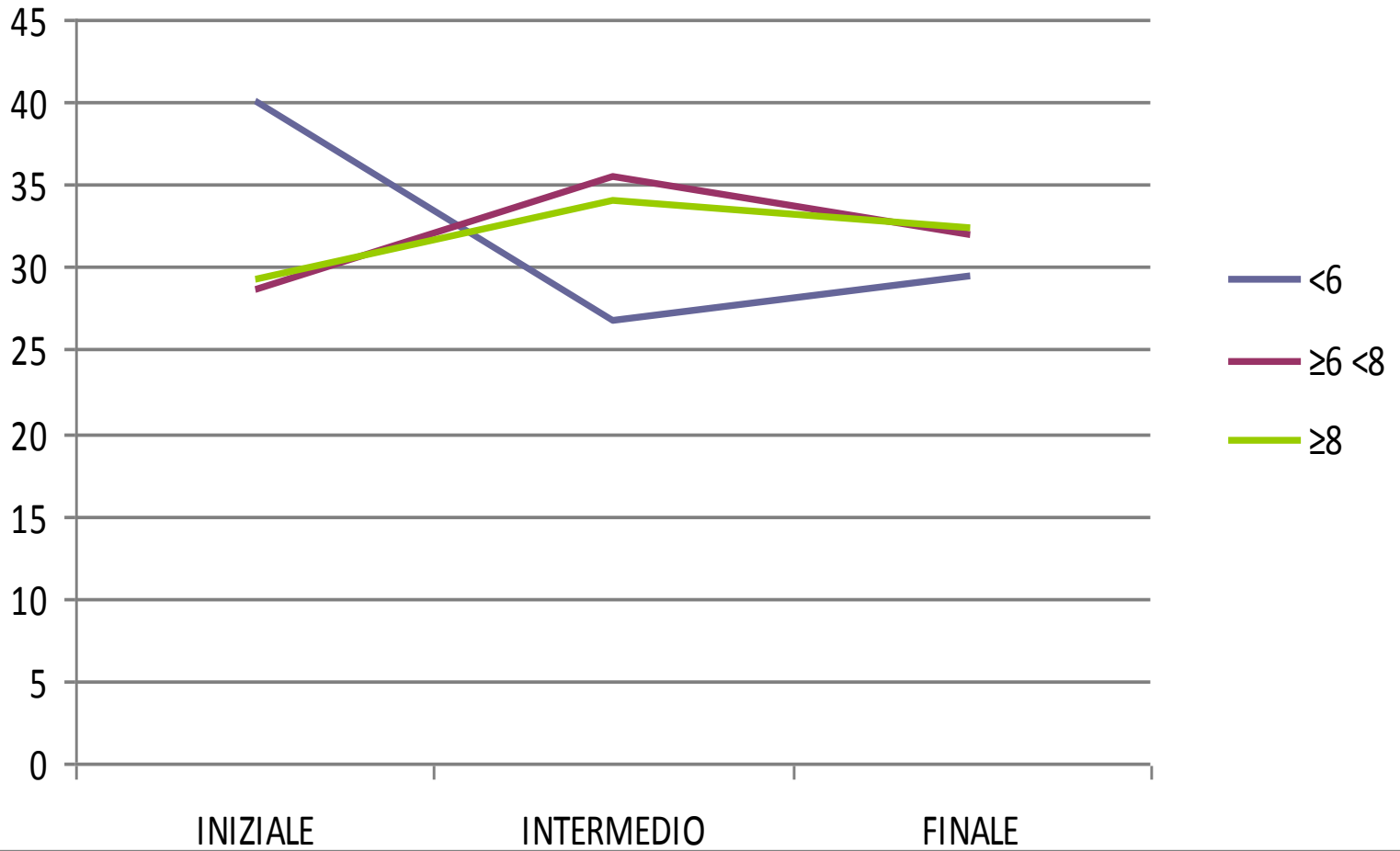
TREND SCOLASTICO

Andamento generale
delle tre prove comuni
secondo le tre fasce

ITALIANO



MATEMATICA



INGLESE

